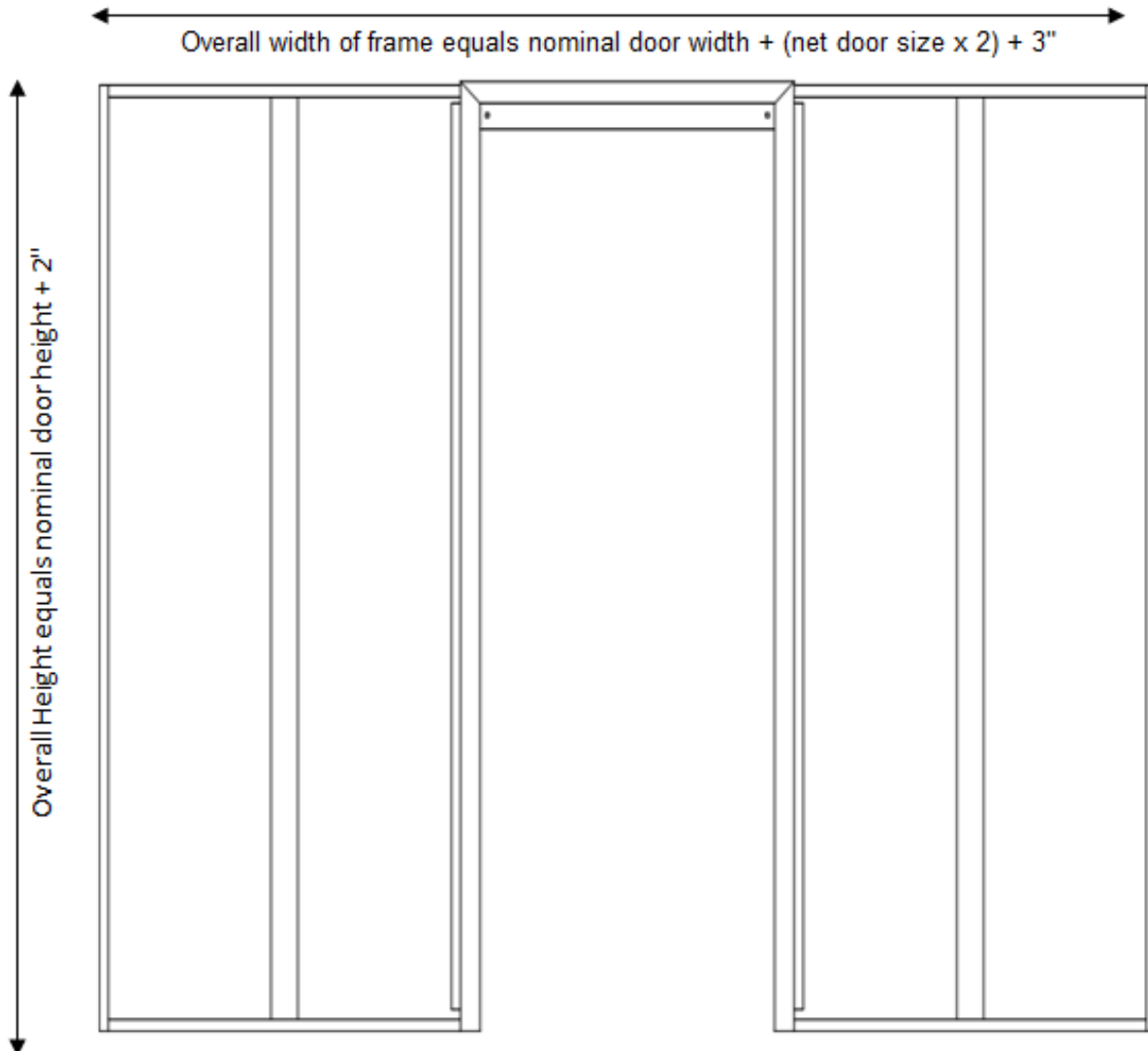
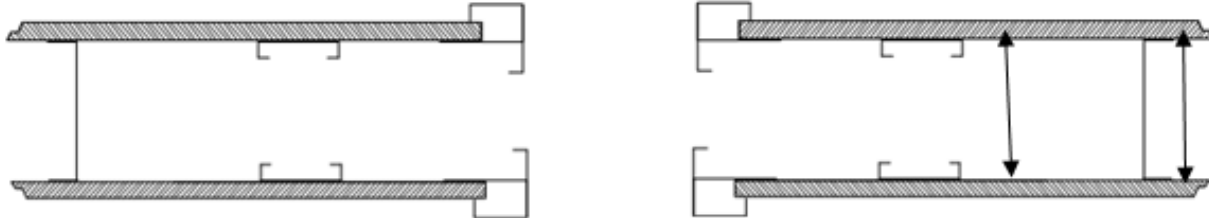
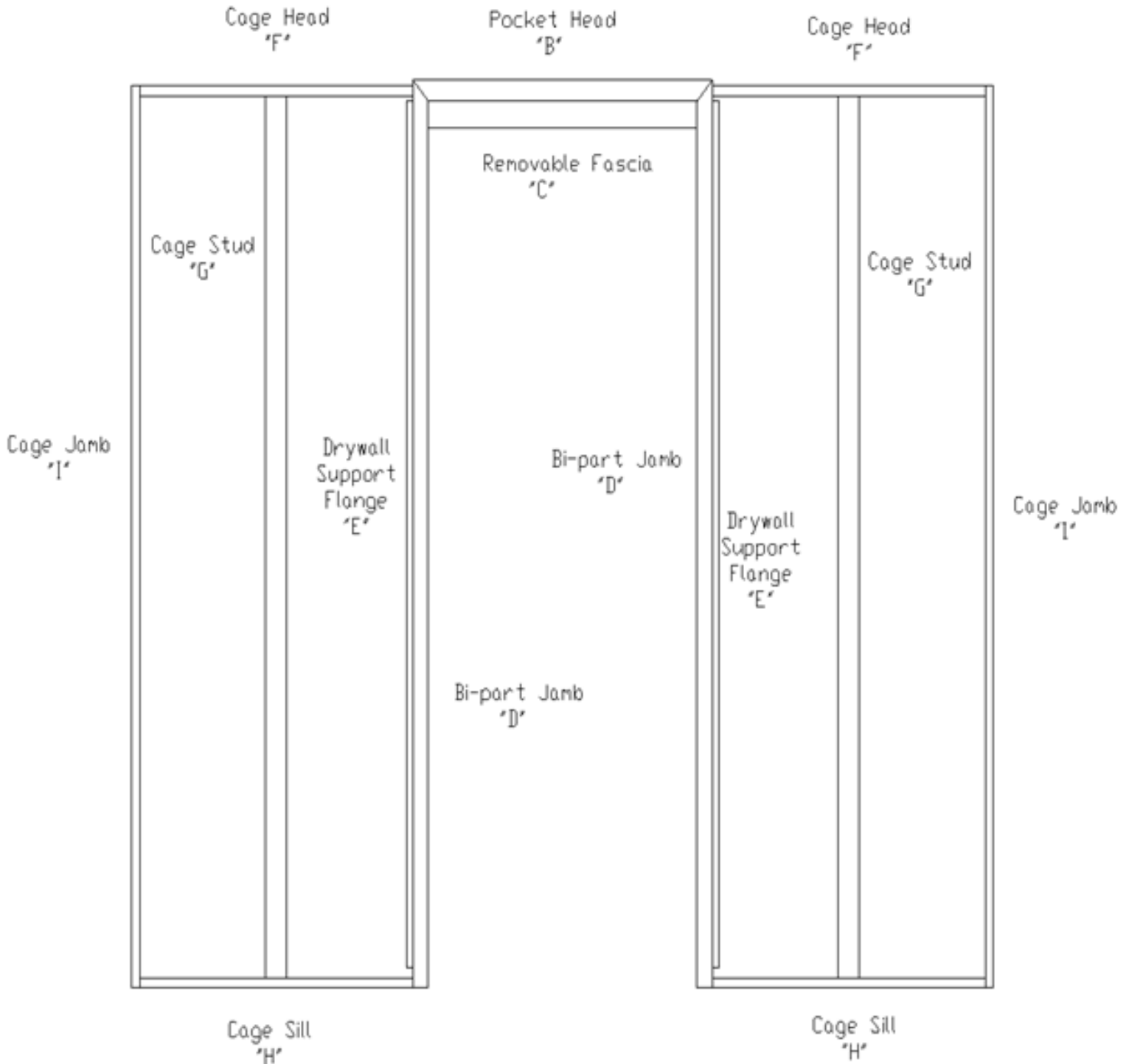


Paired Pocket Door and Frame Detail

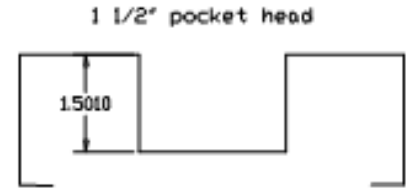
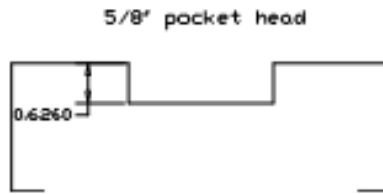
"S" equal actual stud depth



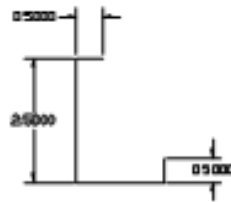
Pocket Door and Frame Detail, Page 2 of 3



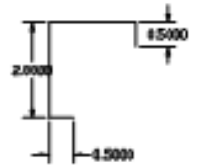
Pocket Head
"B"



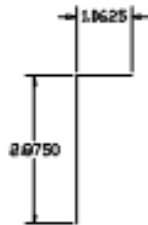
Removable Fascia
"C"



Bi-part Jamb
"D"



Drywall
Support
Flange
"E"



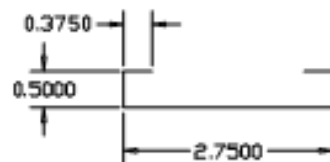
Cage Head
"F"

Cage Sill
"H"

Cage Jamb
"I"



Cage Stud
"G"



Pocket Door and Frame Questions

Nominal Door Size?

Stud Width?

Drywall Thickness?

Manufacturer and Model of Track Hardware?
